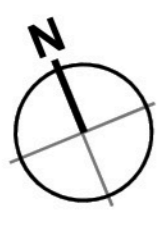
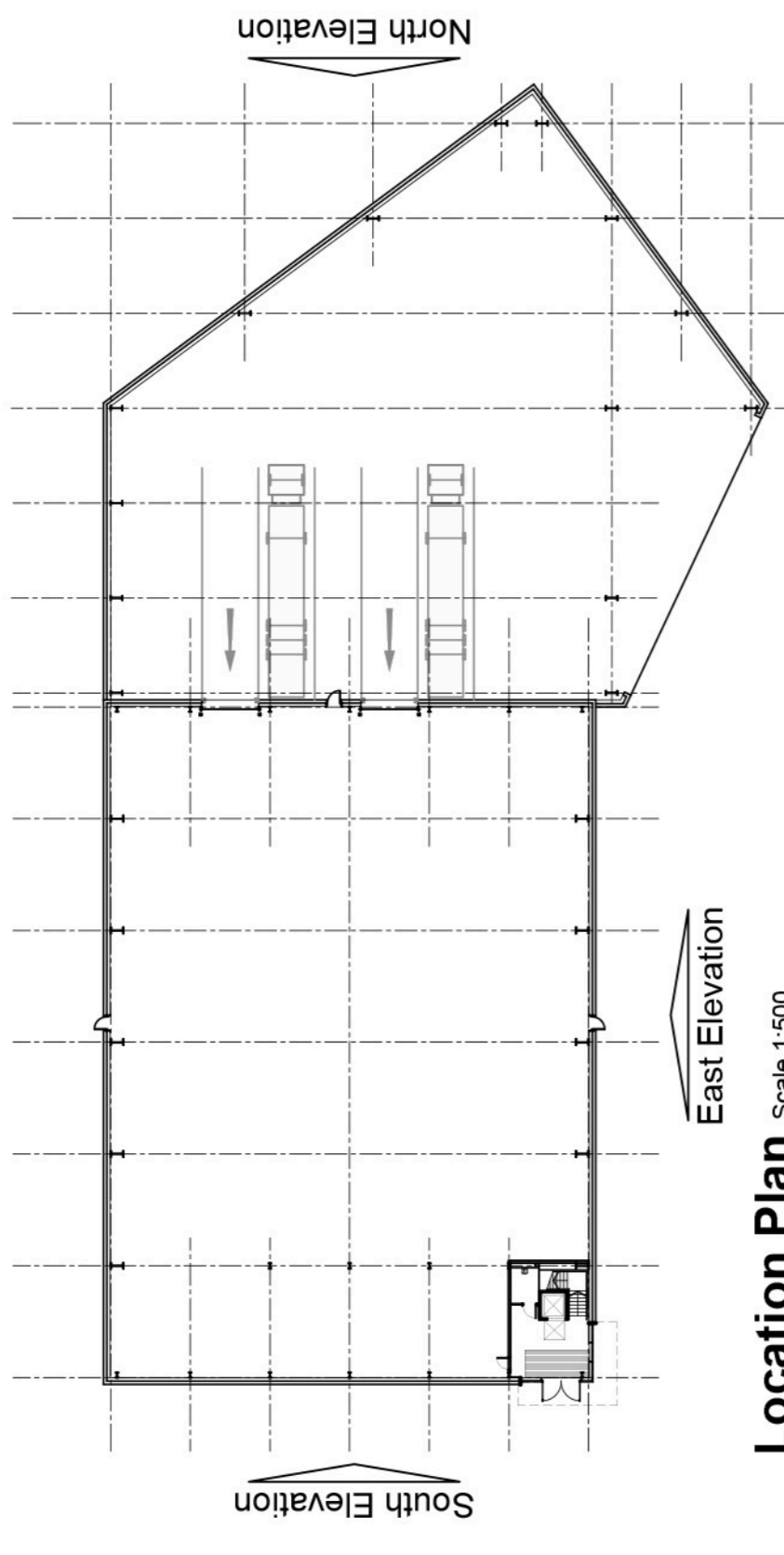


- Dimensions are in millimetres, unless stated otherwise.  
 - Scaling of this drawing is not recommended.  
 - It is the recipient's responsibility to print this document to the correct scale.  
 - All relevant drawings and specifications should be read in conjunction with this drawing.

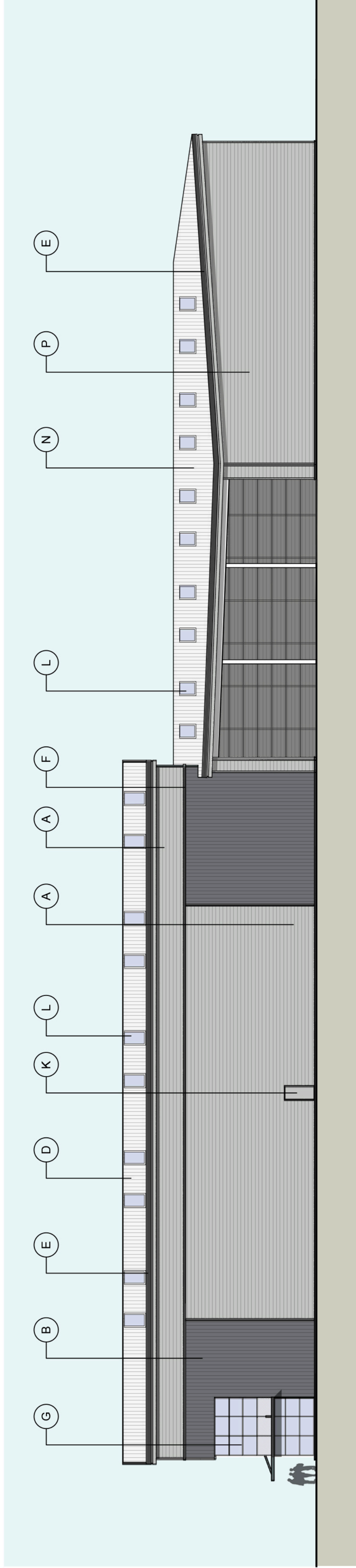


West Elevation

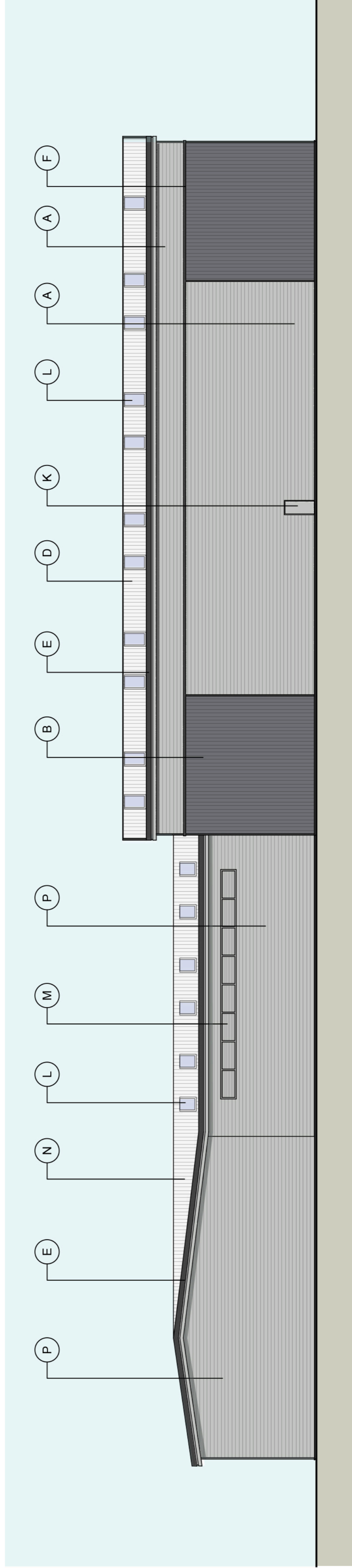


Location Plan Scale 1:500

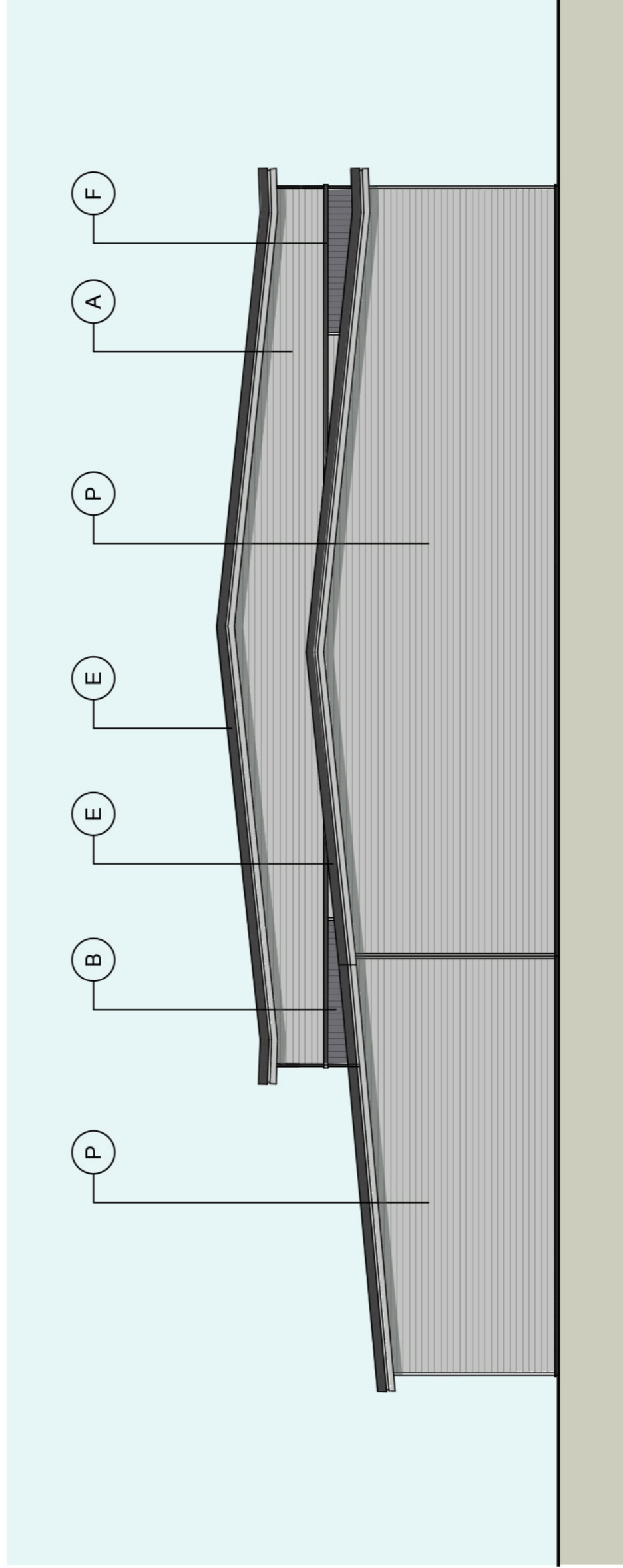
- A** Horizontally laid trapezoidal profiled wall cladding to achieve a minimum performance 'U' value as stated in Part L model & 25 years system guarantee.  
Colour: Oyster Grey (RAL 7035)
- B** Vertically laid trapezoidal profiled wall cladding to achieve a minimum performance 'U' value as stated in Part L model & 25 years system guarantee.  
Colour: Slate Grey (RAL 7012)
- C** 100mm Flat panel cladding system (around docks)  
Colour: Slate Grey (RAL 7012)
- D** Roof trapezoidal profiled cladding to achieve a minimum performance 'U' value as stated in Part L model & 25 years system guarantee.  
Colour: Goosewing Grey (RAL 7038)
- E** 2 Piece Eaves flashing  
Finish: Polyester Powder Coated  
Top Colour: Anthracite (RAL 7016)  
Bottom Colour: Oyster Grey (RAL 7035)
- F** High Level horizontal feature flashing  
Finish: Polyester Powder Coated  
Colour: Anthracite Grey (RAL 7016)
- G** Thermally broken polyester powder coated aluminium curtain wall system - mullion drained system.  
Finish: Polyester Powder Coated  
Frame Colour: Anthracite (RAL 7016)
- H** Sectional vertical lift standard HGV dock leveller loading door  
Finish: Colourcoat PVF  
Colour: Oyster Grey (RAL 7035)
- J** Sectional vertical lift level access loading door  
Finish: Colourcoat PVF  
Colour: Anthracite (RAL 7016)
- K** Steel insulated capacity door and frame  
Finish: Polyester Powder Coated  
Frame Colour: to match adjacent cladding
- L** Rooflights  
Triple skin rooflights to 10% of roof area.
- M** Louvre  
Acoustic Louvre to provide 25.5m<sup>2</sup> ventilated area, with a 20dB sound reduction.  
Finish: Polyester Powder Coated  
Colour: Oyster Grey (RAL 7035)
- N** Roof trapezoidal profiled cladding, 25 years system guarantee.  
Colour: Goosewing Grey (RAL 7038)
- P** Horizontally laid trapezoidal profiled wall cladding 25 years system guarantee.  
Colour: Oyster Grey (RAL 7035)



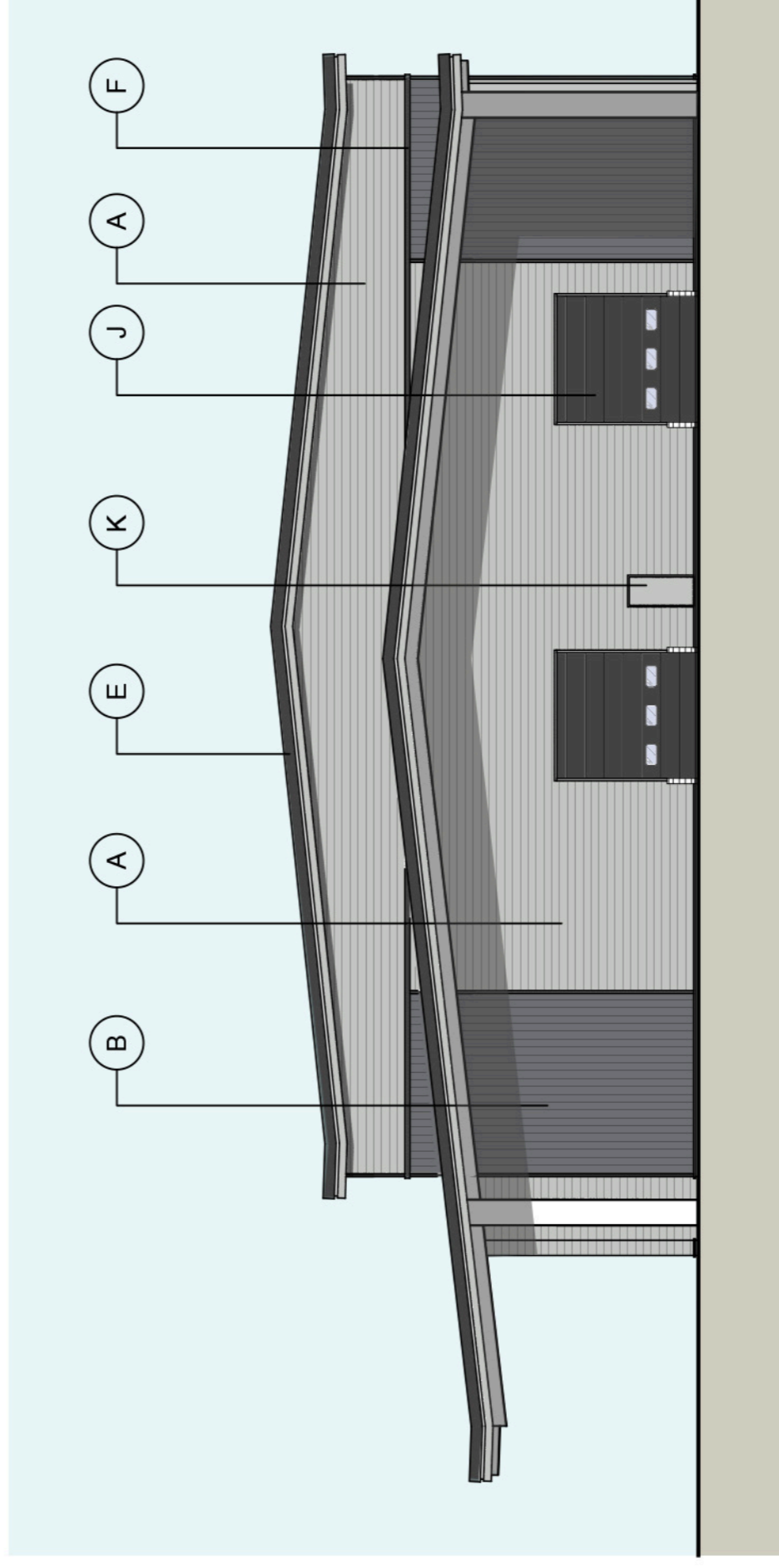
East Elevation Scale 1:200



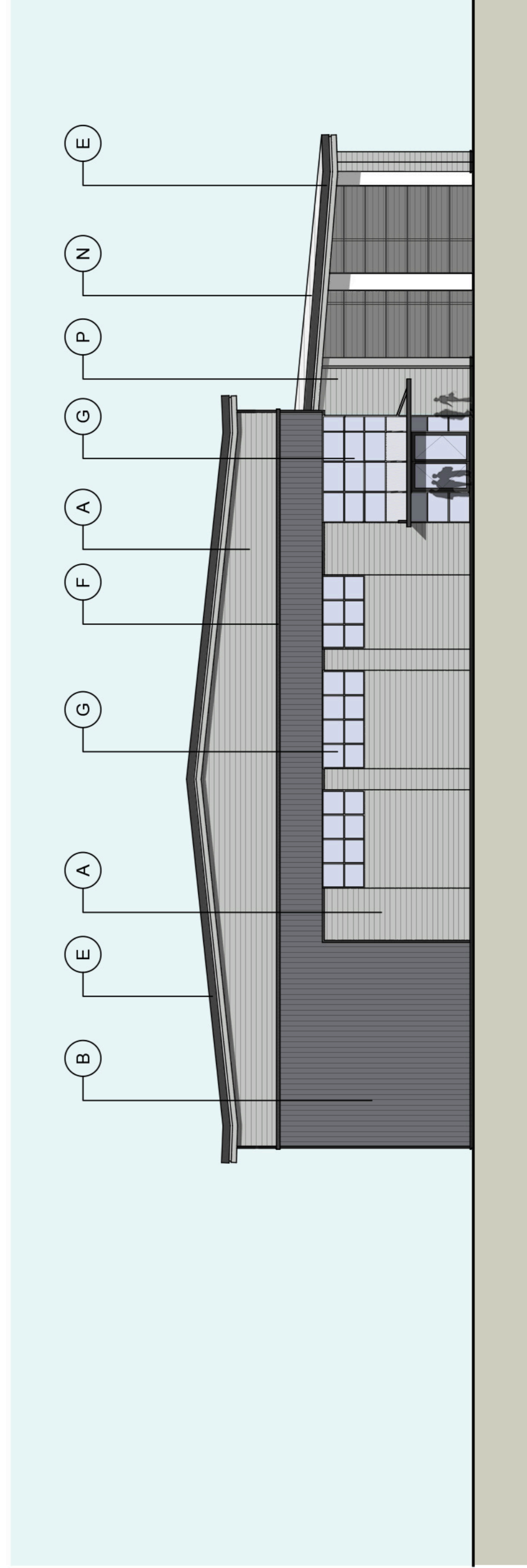
West Elevation Scale 1:200



North Elevation Scale 1:200



North Elevation (Section Through Canopy) Scale 1:200



South Elevation Scale 1:200



P3 Unit amended to single unit with enclosed service SH GDM 04/02/16  
 P2 Units combined to total of 2 units in lieu of 4 GT GDM 30/10/15  
 rev amendments by cld date

Alpha Park, Chandlers Ford  
 Unit 1 - Proposed Elevations



Newbury Office: 100 Station Road, Newbury, Berkshire, RG13 2PN  
 Tel: +44 (0)1356 652027 Fax: +44 (0)1356 652010 Email: info@umcarchitects.com

Drawing Status:	Planning
Drawn:	SH / GMC
Date:	07/08/2015
Scale:	1:200 A1
Drawing no:	13123 P105
Revision:	P3